

BURIAL PRODUCTS & FEES

GRAVE PRICES (PER GRAVE)

| | |
|--------------------------------------|--------------|
| Section 35, 41 & 43 | \$3300 |
| Section 31 & 33 (front hill) | \$3500 |
| Section 52 | \$3500 |
| Section 45 & 46, Flush Marker Spaces | \$2100 |
| Additional Burial Easement Right | \$1050 |
| Infant Spaces | \$60 or \$95 |
| Double Depth Lawn Crypts* | \$7500 |

*Note: Includes 2 interment fees, vault and memorial setting fee. Does not include memorial.

SAINT KATERI FOR NATURAL BURIAL

| | |
|----------------|-------------------|
| Meadow Spaces | \$2100 to \$3100 |
| Pathway Spaces | \$3500 to \$10000 |

MEMORIALIZATION

| | |
|--------------------------|----------------|
| Sheepfold Wall Engraving | \$600 per name |
| Boulders | \$1200 |



INTERMENT/OPENING & CLOSING

| | |
|-----------------------------|--------|
| Adult (Full Casket) | \$1350 |
| Adult Cremation (in ground) | \$750 |
| Child (up to 12 years) | \$125 |

BURIAL VAULTS

| | |
|--------------------------------------------|-------|
| Cemetery Top Seal (with mastic seal) + tax | \$950 |
| Cremation Urn Vault + tax | \$150 |

Prices include graveside service tent and chair setup

OVERTIME CHARGES

| | |
|--------------------------------------|-------|
| Saturday up to 12:30 PM arrival time | \$300 |
| Each additional 1/2 hour after 12:30 | \$100 |
| Weekdays after 2:30 PM, per hour | \$100 |

MAUSOLEUM (FULL CASKET)

| | |
|-----------------------------|--------------------|
| Single Crypts | \$6000 to \$7500 |
| Double Crypts (two people): | |
| Side-by-Side | \$12000 |
| True Companion | \$10000 to \$15000 |
| Westminster | \$9000 |

CREMATION OPTIONS

MAUSOLEUM NICHES

| | |
|-----------------------|------------------|
| St. Mark | \$3500 |
| Mosaic | \$2500 to \$4100 |
| Stations of the Cross | \$3000 |

SPIRIT OF THE LIVING WATER

| | |
|-----------------------|--------|
| Single Niche | \$4000 |
| Double (side by side) | \$8000 |
| True Companion | \$6000 |

* Does not include bronze memorial plate.

GARDEN OF THE HOLY CROSS

| | |
|-----------------------|---------------|
| Single Niche | \$2800-\$3500 |
| Double (side by side) | \$5600 |
| True Companion | \$5600-\$7000 |



Indoor cremation columbarium
featuring glass front niches

MEMORIALS/MONUMENTS

For your convenience, Calvary can arrange to have quality monuments, markers or mausoleums placed at your gravesite. Contact Calvary's office for more information.

MEMORIAL SETTING CHARGES

| | |
|---------------------|-------|
| Under 39" | \$400 |
| 40" - 48" | \$500 |
| Infant section | \$0 |
| Vases Set in Ground | \$200 |

MONUMENT FOUNDATIONS

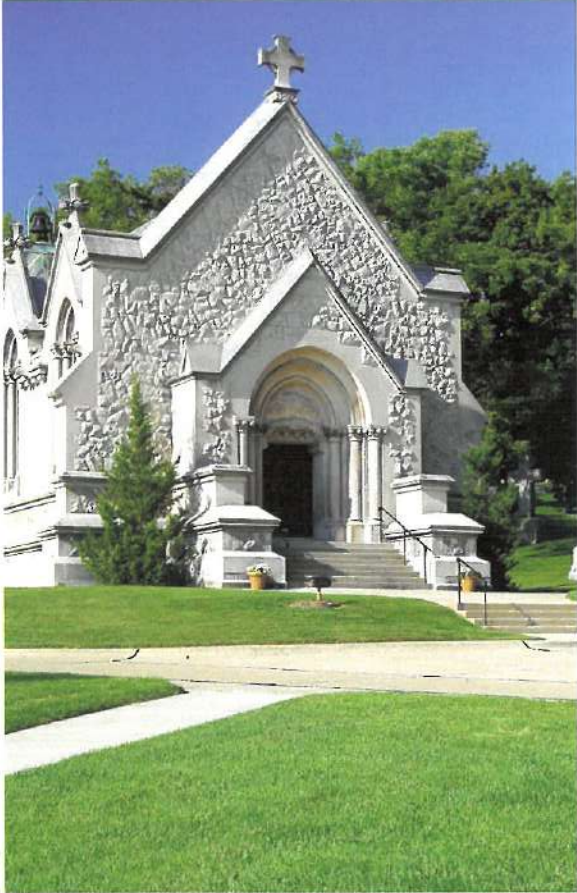
| | |
|--------------------------------------|-----------------|
| Per Square Inch | \$.90 |
| Larger/Heavier Monument | \$1.25 |
| May require larger/deeper foundation | *contact office |

PRIVATE ESTATES

Calvary Cemetery now allows for the placement of private estate lots for cremation, nestled within the beautiful landscaping and water features of the cemetery. Please ask your Family Services Representative for more information.

ENDOWED CARE

All burial easement rights include endowed care



CHAPEL

The chapel holds approximately 110 chairs and also includes a sound system. From November 1 thru April 14 the chapel can be used at 9AM or 1PM. April 15 thru October 31 the chapel can be used anytime. We do not accept reservations more than 30 days in advance.

Chapel Mass and/or Viewing (up to 2 hours) \$400.00
1 hour Chapel Service \$200.00

MASS KIT

Chapel amenities include a lectionary, altar cloth, Roman Missal, and candles.

Prices do not include clergy stipend.

IN HOUSE FINANCING AVAILABLE

10% down.....12 months interest free
15% down.....24 months interest free
A \$50 non-refundable contract fee will apply.

33.3% of all lot purchases are placed in an endowed care fund for the future care and maintenance of the cemetery.

*Prices effective June 1, 2022. Pricing is set by the Calvary Board of Trustees and is subject to change without notification.

The Calvary Cemetery Association is an Ohio not-for-profit corporation.

CELEBRATING 150 YEARS



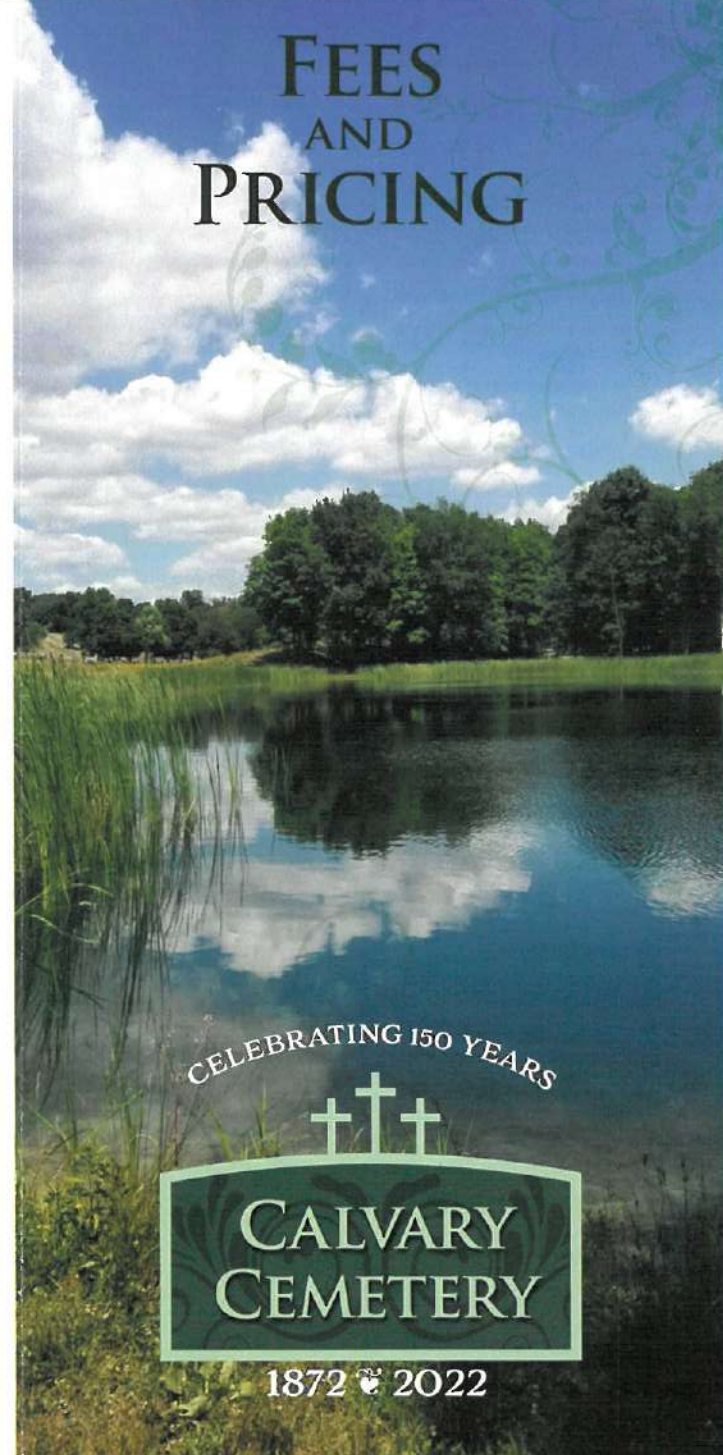
1872 ☪ 2022

SERVING THE MIAMI VALLEY
SINCE 1872

1625 Calvary Drive
Dayton, OH 45409
office: 937.293.1221

www.calvarycemeterydayton.org

FEES AND PRICING



CELEBRATING 150 YEARS



1872 ☪ 2022